

**Winnebago County, IL
GPS PROJECT 2000**

Station Name WIN 20.1-03.7E Station No. 0049

Section 27, Town 46 North, Range 1 East West

Town of ROCKTON, County Winnebago, State Illinois

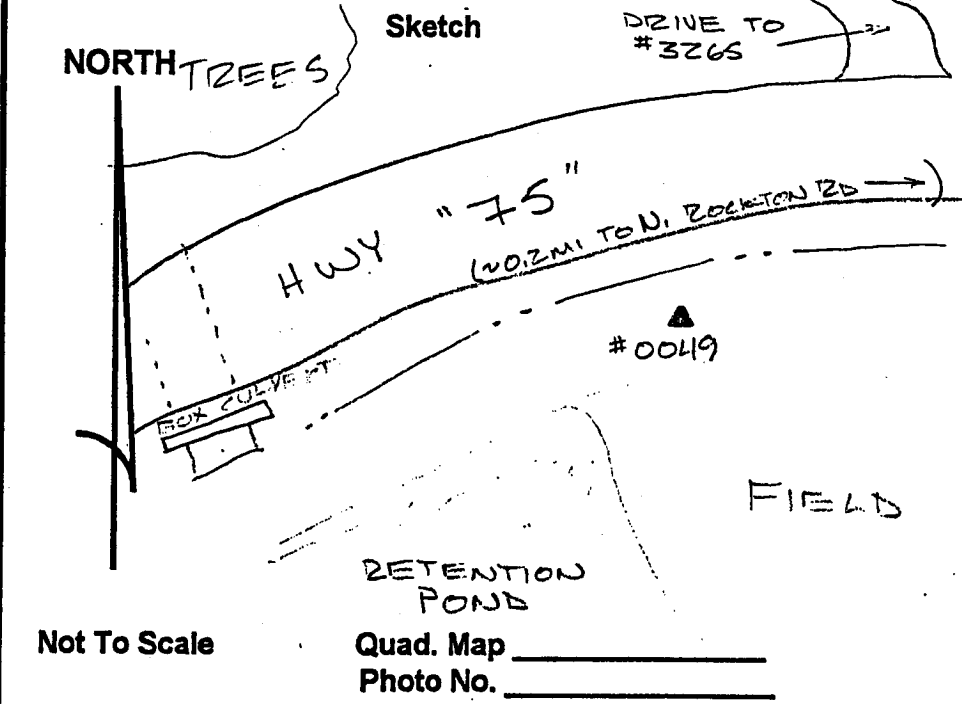
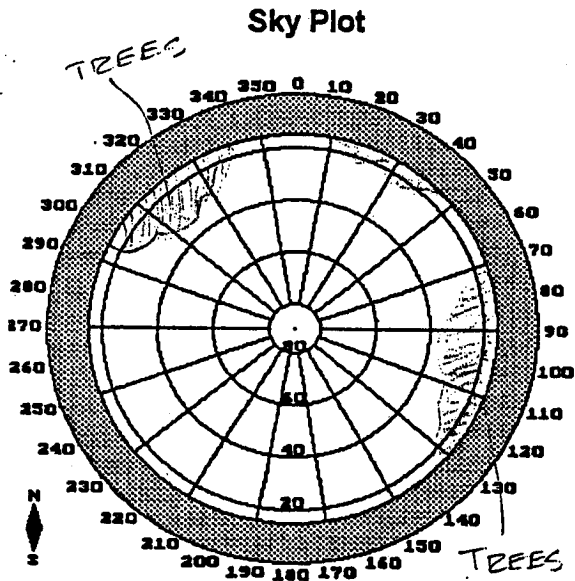
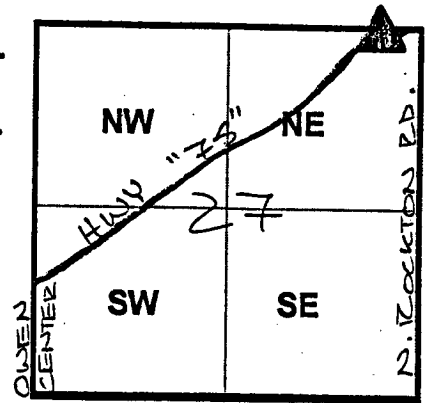
Observer D. MUEENCH; Date of observation 10.12.2000

Order of Control 1ST -Meters - Feet Zone: IL WEST

County Coordinates: N: 641552.560 LAT: 42 26 25.65848 N

H. Datum: NAD 83/91 E: 787460.078 LON: 89 06 13.00899 W

V. Datum: NAVD 88 ELEV: 225.090 ELLIP 191.500 GH '99 -33.59



DESCRIPTION: POINT 0049 IS A STAINLESS STEEL ROD SET 0.1' BLW GED.
IN A HAND-HOLE, LOCATED 235' S/O 4 ILLINOIS STATE HWY "75" 0.2 MI.
W/O N. ROCKTON AVE, 250' W/O 4 PRIVATE DR. TO HOUSE # 3265.