

Winnebago County, IL
GPS PROJECT 2000

Station Name W/1120.5N-03.2W Station No. 87

Section 9, Town 28 North, -Range 11 East / ~~West~~

Town of HARRISON, County Winnebago, State Illinois

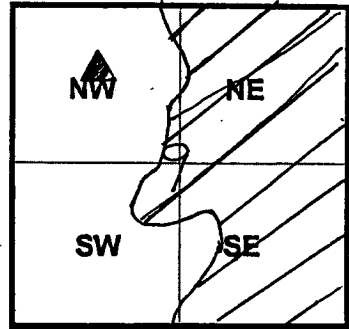
Observer C. SANDS NBS; Date of observation 17 OCT 2000

Order of Control 1ST -Meters - Feet Zone: IL WEST

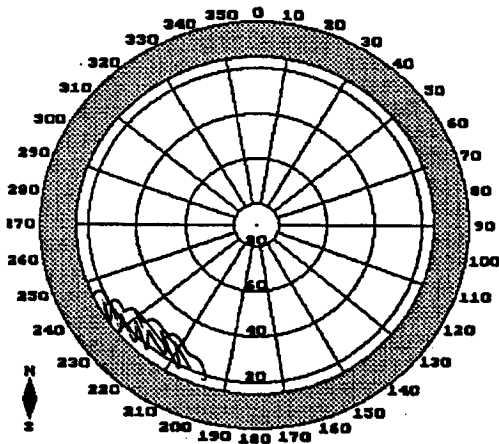
County Coordinates: N: 641973.228 LAT: 42 26 43.52464 N

H. Datum: NAD 83/91 E: 776316.231 LON: 89 14 20.36262 W

V. Datum: NAVD 88 ELEV: 222.300 ELLIP 188.740 GH '99 -33.56

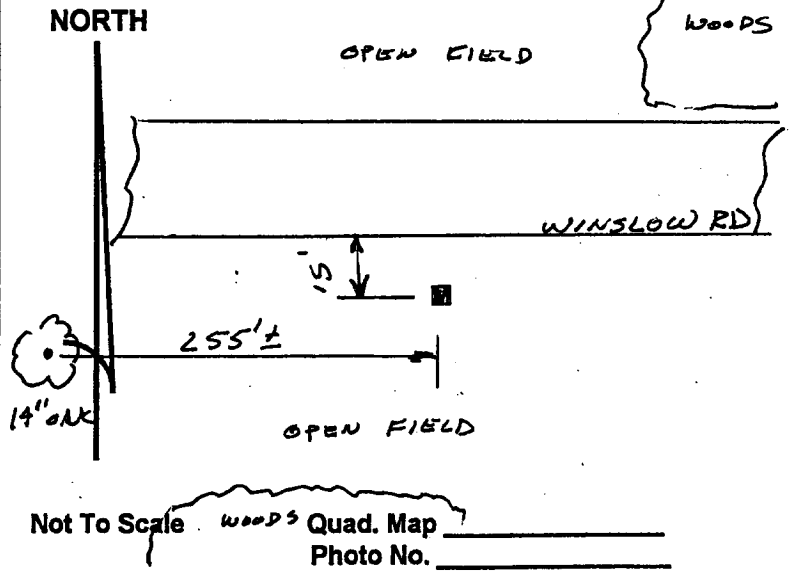


Sky Plot



CLEAR

Sketch



Not To Scale Woods Quad. Map
Photo No. _____

DESCRIPTION: Station is a stainless steel rod in PVC Pipe. Station is 15 feet
South of the South EOP of Winslow Road, approximately 255± feet East
of a 14 inch diameter oak tree.